

# LALSTOP G46<sup>WG</sup>



WETTABLE  
GRANULE

BIOFUNGICIDE

## DEPENDABLE PATHOGEN CONTROL COMBATS FOLIAR AND ROOT PATHOGENS

Protect your plants from destructive diseases. LALSTOP G46 WG controls a variety of both foliar and soilborne diseases in fruit, vegetable, herb, and ornamental crops. LALSTOP G46 WG is effective in vigorously controlling or suppressing **foliar pathogens** such as:

✓ *Botrytis cinerea* ✓ **Powdery Mildews** ✓ *Didymella bryoniae*

and **soilborne pathogenic species** of:

✓ *Pythium* ✓ *Rhizoctonia*

### ADVANTAGES

- Based on a **naturally occurring fungus** that is safe to growers, consumers, beneficial insects, and the surrounding environment.
- Controls a vast number of common plant diseases including grey mold, powdery mildew, gummy stem blight, damping-off, root and crown rots, and others.
- Serves as a **protective barrier against pathogens**, enabling robust plant growth that naturally leads to reduced susceptibility to diseases.
- **Compatible** with most IPM programs.
- **No known risks** for resistance due to multiple modes of action.

### MODES OF ACTION

- Creates protective zones around plants (**Antagonistic Metabolites**).
- Outcompetes pathogenic organisms for space and nutrients on plant surfaces and around roots (**Competition**).
- It also attacks and feeds on key pathogens to reduce their potential to infect plants and cause disease (**Predation and Hyperparasitism**).

**TIP:** For even better management of foliar diseases with LALSTOP G46 WG, combine with LALSTIM OSMO to reduce stress effects that make plants more susceptible to infection.

Greenhouse



### CHARACTERISTICS

#### EPA REGISTERED

#### Active Ingredient

*Clonostachys rosea* strain J1446

#### Guarantee

> 1.0 x 10<sup>9</sup> CFU/g

#### Package Size

- 5 x 2 lbs
- 10 x 3.5 oz

#### Storage information

Store in original packaging in a cool, dry place for up to 12 months, or refrigerated (39°F) for up to 24 months. Avoid overheating.

#### 4-hour REI; 0-day PHI

**Always read and follow label instructions.**

### RECOMMENDED CROPS



Greenhouse  
Fruit & Vegetables



Cannabis\*



Field-Grown  
Fruit & Vegetables



Ornamentals

\*Only in states where legally permitted.

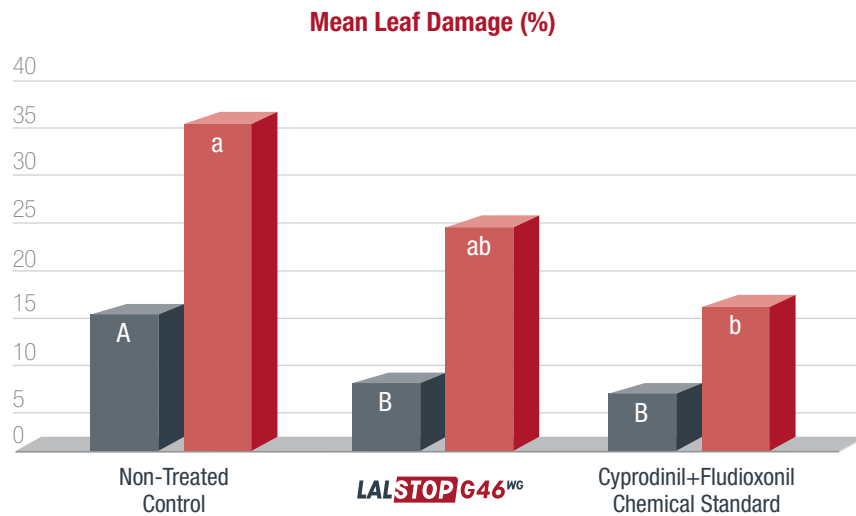
Microbial by nature

LALLEMANDPLANTCARE.COM

LALLEMAND

## TRIAL RESULTS

Botrytis Grey Mold Reduction on Greenhouse Tomato



SICOP, Spain, 2018

Tomato Variety: 'Volley' - Greenhouse

Naturally high *Botrytis cinerea* pressure

4 Applications per Treatment

### CONCLUSION:

LALSTOP G46 WG provides Botrytis control similar to the chemical standard, giving growers another effective tool for their disease management programs.

### ASSESSMENT DATE

■ 32 Days (3 applications made)

■ 47 Days (4 applications made)

Treatments with the same letter on the same assessment date are not significantly different ( $P < 0.05$ ).

## APPLICATION RATES

APPLICATION METHOD	LALSTOP G46 WG APPLICATION RATES
Foliar Spray	0.07 – 3.7 oz per 10,000 ft <sup>2</sup> (2 – 104 g per 10,000 ft <sup>2</sup> )
Cold Fogging / ULV Spray	0.13 oz / gal per 1000 ft <sup>2</sup> (3.5 g / gal per 1000 ft <sup>2</sup> ) 1.25 oz / 10 gal per 10,000 ft <sup>2</sup> (1.25 g / 10 gal per 10,000 ft <sup>2</sup> )
Cutting, Bare-Root, Bulb, Corm, Rhizome, Tuber or Cutting Dip or Spray, or Seed Soak	0.13 – 1.3 oz per 10-gal water (3.6 – 36 g per 10 gal water)
Growing Medium or Soil Drench / Spray	0.1 – 0.3 oz per 1000 ft <sup>2</sup> (2.8 – 9.3 g per 1000 ft <sup>2</sup> ) – Small Seedlings / Trays 0.03 – 0.3 oz per 1000 ft <sup>2</sup> (0.9 – 9.3 g per 1000 ft <sup>2</sup> ) – Micropropagation 0.1 – 0.7 oz per 1000 ft <sup>2</sup> (2.8 – 18.6 g per 1000 ft <sup>2</sup> ) – Transplanted / Production Crops, Planting Beds
Drip Irrigation or Chemigation	0.02 – 0.37 oz per 1000 ft <sup>2</sup> (0.6 – 10.4 g per 1000 ft <sup>2</sup> ) or 0.7 – 0.9 oz per 1000 plants (20 – 25 g per 1000 plants)
Growing Medium / Soil Incorporation	0.2 – 0.4 oz per yd <sup>3</sup> (5 – 11 g per yd <sup>3</sup> ), for use within 1 week of preparation
Banded, In-Furrow or Side-Dress Application	0.07 – 0.4 oz per 1000 ft <sup>2</sup> (2 – 10.4 g per 1000 ft <sup>2</sup> )

Use lower rates for lower disease pressures and/or low plant densities, and higher rates for higher disease pressures and/or higher plant densities. Consult with your distributor or Lallemand Plant Care representative for rate, timing and other application recommendations specific to your operation..

### About Lallemand Plant Care

For over 100 years, Lallemand has been an expert in yeast and bacteria manufacturing. It is now a global leader in the development, production, and marketing of microorganisms for various industries. Using sound science and know-how, Lallemand Plant Care provides effective microbial-based solutions that deliver agronomic, economic, and sustainable value to growers.